

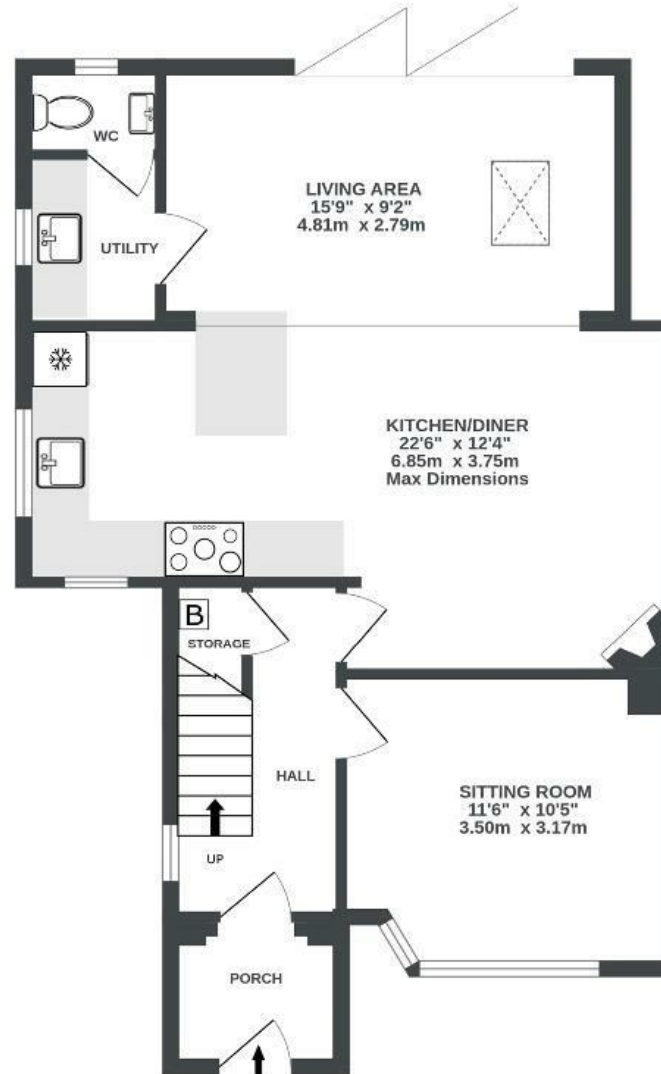
Lakewood Crescent

WESTBURY ON TRYM

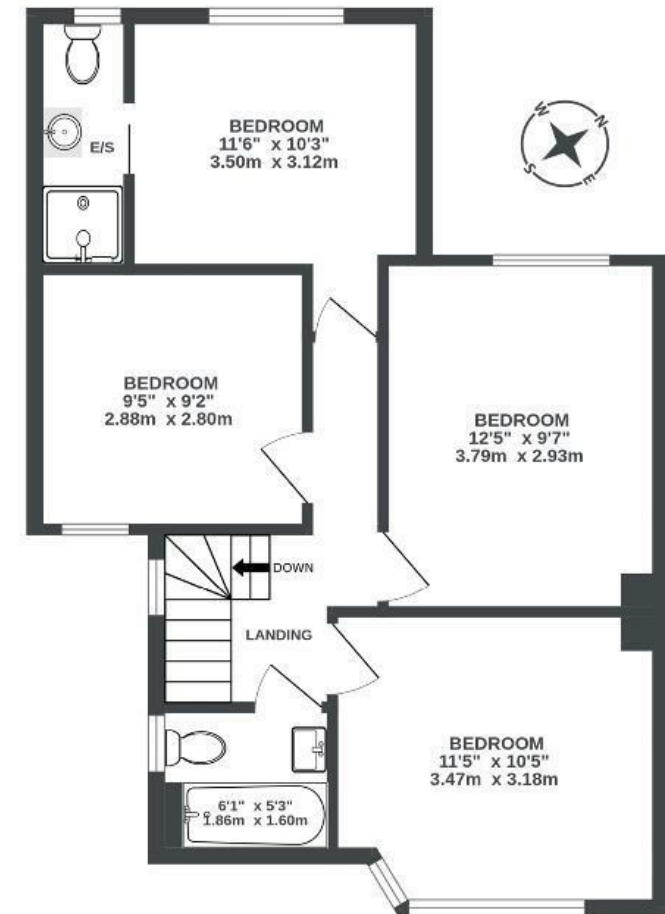
APPROXIMATE FLOOR AREA
109.3 SQM / 1177 SQFT



GROUND FLOOR
639 sq.ft. (59.4 sq.m.) approx.



1ST FLOOR
537 sq.ft. (49.9 sq.m.) approx.



Illustrations are for reference purposes only, measurements are approximate, not to scale.

Boardwalk

Lakewood

WESTBURY-ON-TRYM, BRISTOL



£550,000



4 Bedrooms



Bristol, BS10



2 Bathrooms

5HT

"It feels like we are living in a little part of the countryside with all the city has to offer on our doorstep. We wake up to the sound of the birds and the beautiful backdrop to Badock's wood from our windows. This is a beautiful space to be surrounded by and we've spent many a sunny evening and weekend enjoying walks, playing pooh sticks in the stream and enjoying the beauty and buzz of such a wonderful spot to live.

When I asked my twin daughters to describe the house they replied "We love watching the wildlife from our garden & the view of the woods. Our favourite part of the house is our big kitchen/family room as it provides an aesthetic space full of atmosphere and that is why we love the house." The house is situated in a Crescent that has a friendly, calm, inviting and happy vibe to it."

